



**MATATIELE**  
LOCAL MUNICIPALITY

# **MATATIELE** LOCAL MUNICIPALITY

Research and analysis of ward profiling: Ward based plans

**WARD 04**

**May 2018**

**TSHANI**  
CONSULTING C.C.



Contents

1. Executive Summary of Ward .....4

2. Introduction.....4

3. Methodology.....5

4. Ward Overview.....5

5. Socio Economic Analysis .....6

6. Built Environment Assessment..... 12

7. Current Projects ..... 14

8. Ward Needs and Priorities ..... 14

9. Stakeholder within the Ward..... 15

10. Social Challenges within Ward..... 15

## List of Tables

Table 1: SWOT Analysis - Community Based Planning Program 2017 (Data Collection) .....	5
Table 2: Major Event in Ward: Community Based Planning Program 2017 (Data Collection) .....	5
Table 3: Programmes within the Ward – Community Based Planning Program 2017 (Data Collection) ....	6
Table 4: Population Size and Distribution within the Ward – Community Based Planning Program 2017 (Data Collection) .....	6
Table 5: Child and Female Headed Households within the Ward - Census 2011 .....	8
Table 6: Education Facilities within Ward - Community Based Planning Program 2017 (Data Collection) ..	9
Table 7: Churches and Religious Organisations within the Ward - Community Based Planning Program 2017 (Data Collection) .....	10
Table 8: Health Care Facilities: Community Based Planning Program 2017 (Data Collection) .....	10
Table 9: Community Halls - Community Based Planning Program 2017 (Data Collection) .....	10
Table 10: Economic Activity - Community Based Planning Program 2017 (Data Collection) Tourism Activities .....	11
Table 11: Agricultural Activities - Community Based Planning Program 2017 (Data Collection) .....	11
Table 12: Products produced within the ward- Community Based Planning Program 2017 (Data Collection) .....	11
Table 13: Existing Skills within the Ward: Community Based Planning Program 2017 (Data Collection) ..	12
Table 14: Access to water- Community Based Planning Program 2017 (Data Collection) .....	12
Table 15: Main source of energy- Community Based Planning Program 2017 (Data Collection) .....	12
Table 16: Access to sanitation- Community Based Planning Program 2017 (Data Collection) .....	12
Table 17: Roads and bridges within ward- Community Based Planning Program 2017 (Data Collection) ..	13
Table 18: Roads and Bridges within the Ward - Community Based Planning Program 2017 (Data Collection) .....	14
Table 19: Ward Needs - Community Based Planning Program 2017 (Data Collection) .....	15
Table 20: Ward Priorities - Community Based Planning Program 2017 (Data Collection) .....	15
Table 21: Stakeholder within Ward – Community Based Planning Program 2017 (Data Collection) .....	15
Table 22: Challenges within Ward – Community Based Planning Program 2017 (Data Collection) .....	15

## List of Figures

Figure 1: Gender Distribution .....	6
Figure 2: Age within Ward Distribution – Census 2011 .....	7
Figure 3: Language Proficiency within Ward – Census 2011 .....	7
Figure 4: Gender of Household Head - Census 2011 .....	8
Figure 5: Types of Dwelling within Ward – Census 2011 .....	8
Figure 6: Highest Level of Education within the Ward – Census 2011 .....	9
Figure 7: Individual Monthly Income - Census 2011 .....	11
Figure 8: Source of Energy for Heating within the Ward - Census 2011 .....	13

## List of Plans

Plan 1: Ward 1 Locality Plan .....	5
Plan 2: Health Care facilities .....	10
Plan 3: Access to Electricity for Heating Within the Ward .....	13
Plan 4: Roads and Bridges within the Ward - MLM GIS .....	14

The following sections have been identified and populated as part of the analysis for Ward 04. The headings which have been covered are seen as critical topics for the ward analysis. When broken down one can properly understand and interpret the spatial economic status quo and development trajectory of the Ward.

## 1. Executive Summary of Ward

Ward 04 comprises of the villages of Tiping, Bethel, Zikhalini, Maphokong, Zazingeni, Mazizini, Newstance, Nkasele, Tsitsong and Sehlabeng. There is approximately a total population of 8328. There is a high number of youth in the population of ward 04. The gender split within the ward is made up of 56% female and 44% males. Africans reflect a dominant number in this population.

Most of ward 04 villages are situated along the route to Lesotho. Farming in most households in ward 04 seems to be the major economic activity practised in ward 04. Blocks manufacturing, production of milk and wool found in this ward loom as a potential to uplift the ward economically. Sand Mining and Plantation are natural resources found in this ward and used for various manufacturing purposes.

This ward shows a significant number of educational facilities; the recorded facilities are combined, primary and secondary schools were recorded in Ward 04. These schools are located in the various villages of ward 04.

There are four (4) Mobile Clinics located within the ward. The absence of permanent health care facilities means clinics located in neighbouring wards provides for basic primary health services such as family planning, basic check-ups, and immunization for Ward 04. There is one community hall located in Bethel.

The villages in the ward show that majority use pit toilets without ventilation, only Zazingeni, Mazizini and Tsitsong villages that do not have pit toilets. Some villages have access to water in this ward but the district municipality needs to consider those that are in need of piped water.

The provision of electricity in the ward is relatively high. Wood and electricity is mostly used for heating and cooking respectively. The use of solar energy must be promoted and educating communities on renewable energy is paramount.

The T13 Road is the main road that links most of these villages in this ward with Matatiele as a town which is always in bad condition. The MLM constructed many access roads to access many villages in this ward but they all need maintenance.

The high rate of an unemployment in this ward seems to be one of the major social challenges, especially among the youth.



## 2. Introduction

The Matatiele Local Municipality (MLM) appointed Tshani Consulting CC for the analysis and ward profiling for the 26 wards within MLM.

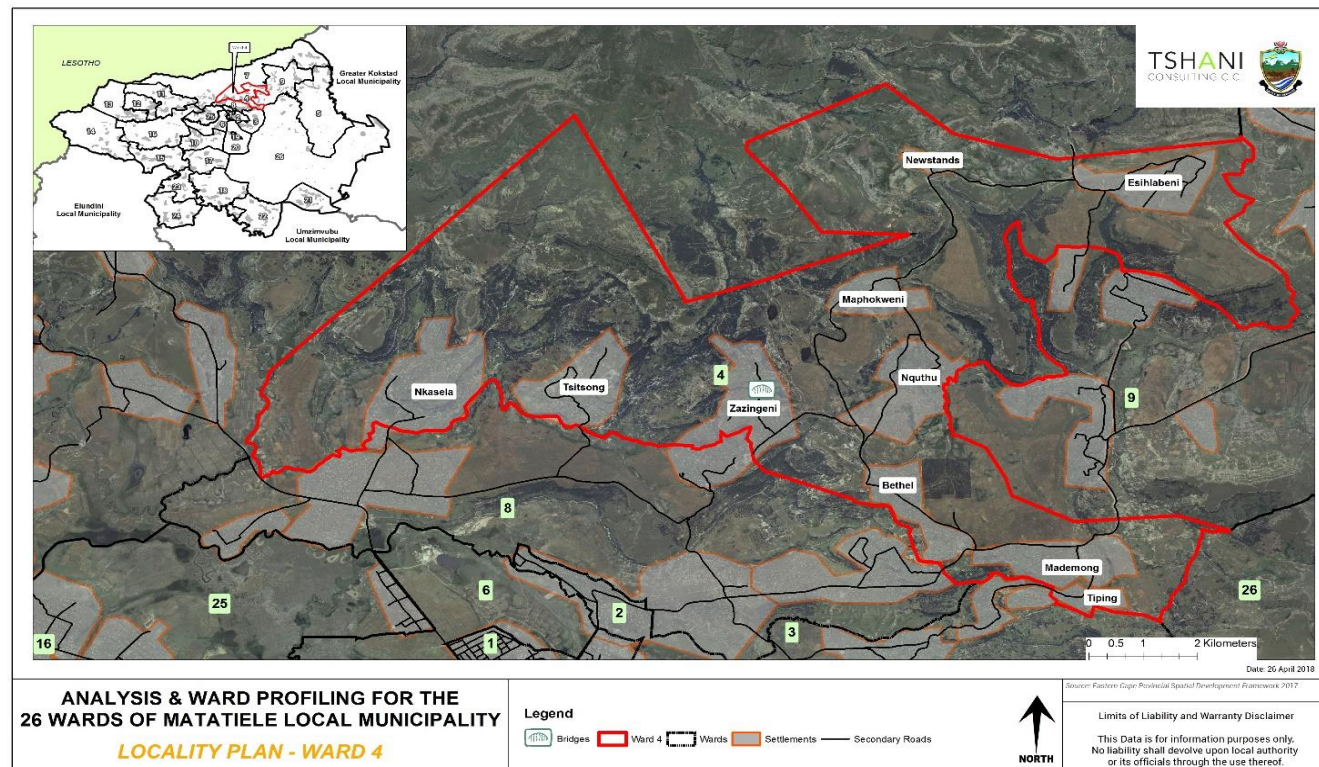
The purpose of this report is to review the current the Ward Based Plan prepared for Ward 04 and the LM that was developed in 2014. Through this exercise the ward profiling ensures the prioritisation of projects and channelling such projects into places of need.

The report serves as the analysis and profiling of Ward 04.

### 2.1. Locality

Ward 04 is surrounded by wards 2, 8, 9, and 26. As depicted in the plan below, the main villages within Ward 04 are Hebron, Tsepisong, Masakala and Khohlong. It is to be noted that all Wards which have been listed were identified through the community outreach programmes. The Village names captured on plans are as per the villages which exist on the GIS and Census databases.





Plan 1: Ward 1 Locality Plan

### 3. Methodology

The methodology utilised for the analysis and profiling in this report was derived as follows:

1. Synthesis an interpretation of questionnaires and community feedback;
2. Translated information into a Strength, Weakness, Opportunities and Threats analysis;
3. Conducted a verification process on the populations profiles, social profile and economic profile using Census 2011 data which was conducted at a Ward level;
4. A detailed GIS mapping exercise was completed in order to translate the findings into spatially represented outcomes;
5. Ward needs, and priorities were identified for the wards;
6. Needs identified for the ward were translated into projects and a consolidated implementation plan together within financial implications was completed.

The analysis of ward 04 also took its '*point of departure*' from the primary data which was available from the data collection and community consultation completed in the previous phase

### 4. Ward Overview

The section below highlights the specific sections which were analysed in relation to ward 04.

#### 4.1. SWOT Analysis

The SWOT analysis was developed, through a series of engagement sessions with the local community and traditional leadership of Ward 04, by the municipality.

STRENGTHS	WEAKNESSES
<ul style="list-style-type: none"> <li>Available forest</li> <li>People with experiential skills</li> <li>Growing youthful population</li> </ul>	<ul style="list-style-type: none"> <li>Limited access to health services</li> <li>Improve technical skills</li> <li>Management</li> <li>Unemployment among the youth</li> <li>Poor road conditions</li> </ul>
OPPORTUNITIES	THREATS
<ul style="list-style-type: none"> <li>Brick Making</li> <li>Sand</li> <li>Plantation</li> <li>Skilled people</li> </ul>	<ul style="list-style-type: none"> <li>Climate change</li> <li>Teenage pregnancy</li> <li>Drought</li> <li>Increasing Crime rate</li> </ul>

Table 1: SWOT Analysis - Community Based Planning Program 2017 (Data Collection)

#### 4.2. Major events within the Ward

The table below highlights the major event which have been associated with Ward 04 over the last couple of years. The ward has experienced minimum project investment. The world vision took place in that ward and unfortunate spell of rain damaged houses. .

EVENT/ OCCURANCE	YEAR	IMPACT
World vision	2016	People learn more how to start project
Houses Disaster	2017	Most people are affected during the rain last week of February

Table 2: Major Event in Ward: Community Based Planning Program 2017 (Data Collection)

#### 4.3. Services/ Infrastructure and Programmes Within The Ward Within The 5-Year Period (2012-2016)

Ward 04 has experienced a fair amount of social and engineering infrastructure investment in the 2012-16 period. It is evident that the benefits of these projects have benefited the ward as well as the municipality as a whole.

Type	Year	Beneficiaries	Status / present condition	Impact
Community hall	2014	All	Good	Everyone uses the hall at anytime
Water taps	2012	3	Bad	Bethel yard connection affected other villages
Toilets	2014	7	Good	Few people living without toilets
Road	2016	1	Good	Mazzini and Zazingeni road easily access their villages

Table 3: Programmes within the Ward – Community Based Planning Program 2017 (Data Collection)

## 5. Socio Economic Analysis

### 5.1. Population Profile

The section below provides an analysis of the population profile of ward 04.

#### 5.1.1. Population Size and Distribution

Total population of Ward is 8328

LIST OF VILLAGES/ LOCATIONS/SUB AREAS	OTHER NAME/S FOR THE VILLAGE/ LOCATION	NUMBER OF HOUSEHOLDS			POPULATION SIZE (NUMBER OF PEOPLE)		
		Community Feedback	Census 2011	Projected Household by 2050 growing at 0.3% Per Annum	Community Feedback	Census 2011	Projected Population by 2050 growing at 2% Per Annum
Tiping	N/A	800	1890			1890	
Bethel	N/A	628	1566			1566	
Zikhalini	N/A	325					
Maphookong	N/A	159					
Zazingeni	N/A	635					
Mazizini	N/A	200					
Newstance	N/A	80					
Nkasele	N/A	425					

Tsitsong	n/a	180	453				
Sehlabeng	n/a	190				453	
<b>Total</b>		3 622	2013	2222		8328	9463

Table 4: Population Size and Distribution within the Ward – Community Based Planning Program 2017 (Data Collection)

#### 5.1.2. Gender Distribution

The chart below depicts that 56% of the total population of Ward 04 are female. This is typical of most wards in Matatiele. This statistic also speaks to the table below on child headed households. The growing distribution of females within the ward necessitates the provision of support for increased fertility demands and maternal support.

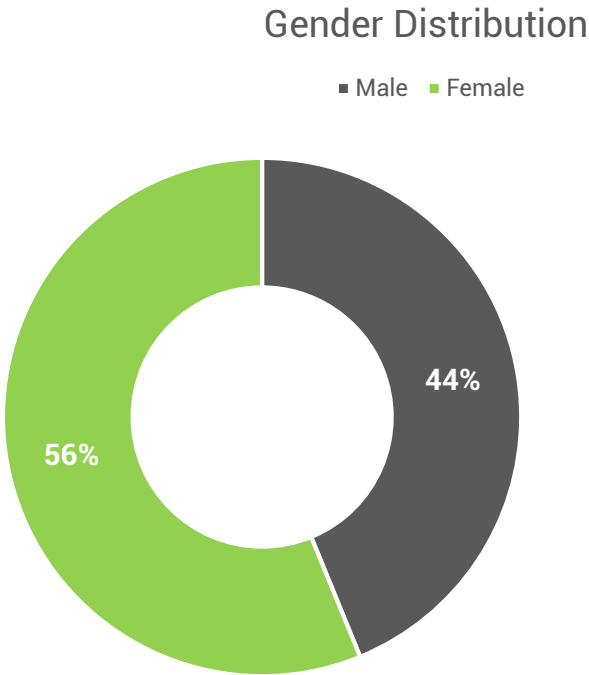


Figure 1: Gender Distribution

#### 5.1.3. Age

The dominant age group in Ward 04 is the classified age group of 15-19 yrs. The population of this ward is dominated by younger people (0-20). There is a sharp decline in the number of people per age group from ages 20 years and older.

*This community certainly needs to invest more in educational institutions (primary schools and crèches) and employment opportunities in order to attend to the needs of the youthful population.*

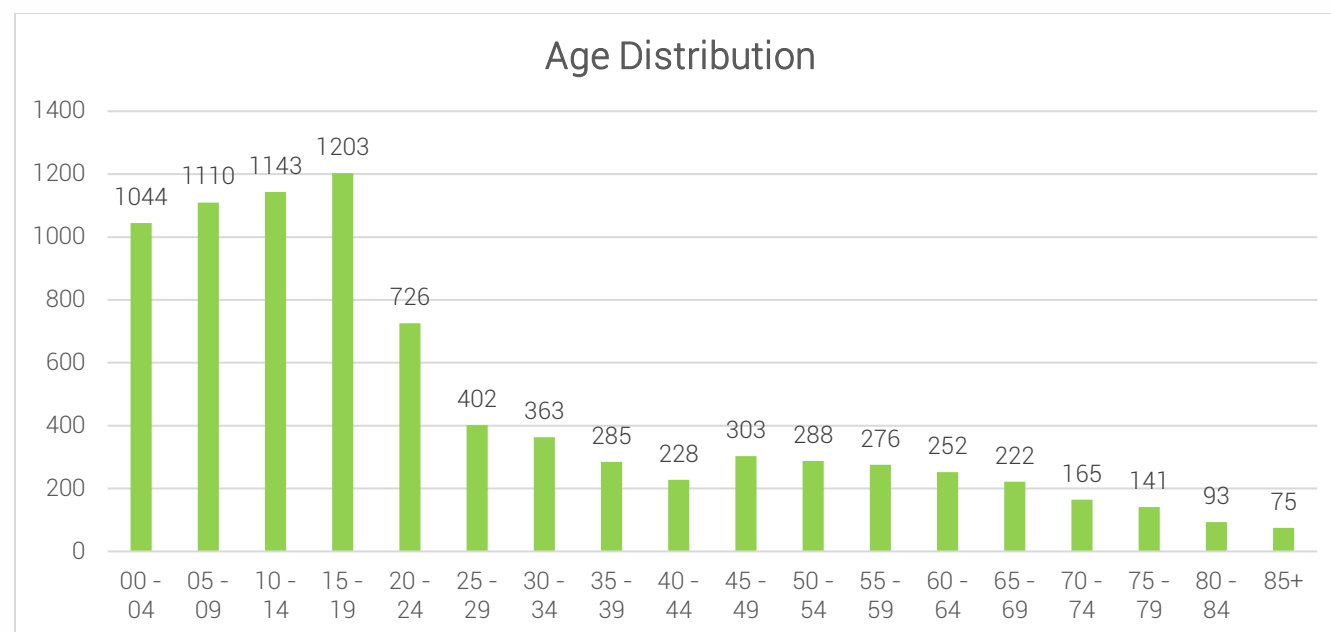


Figure 2: Age within Ward Distribution – Census 2011

#### 5.1.4. Language Distribution

It is evident that the most spoken language in Ward 04 is Sesotho followed by isiXhosa. The language preference correlates to the racial split within ward 04 and is an indication of the language preference which people appreciate.

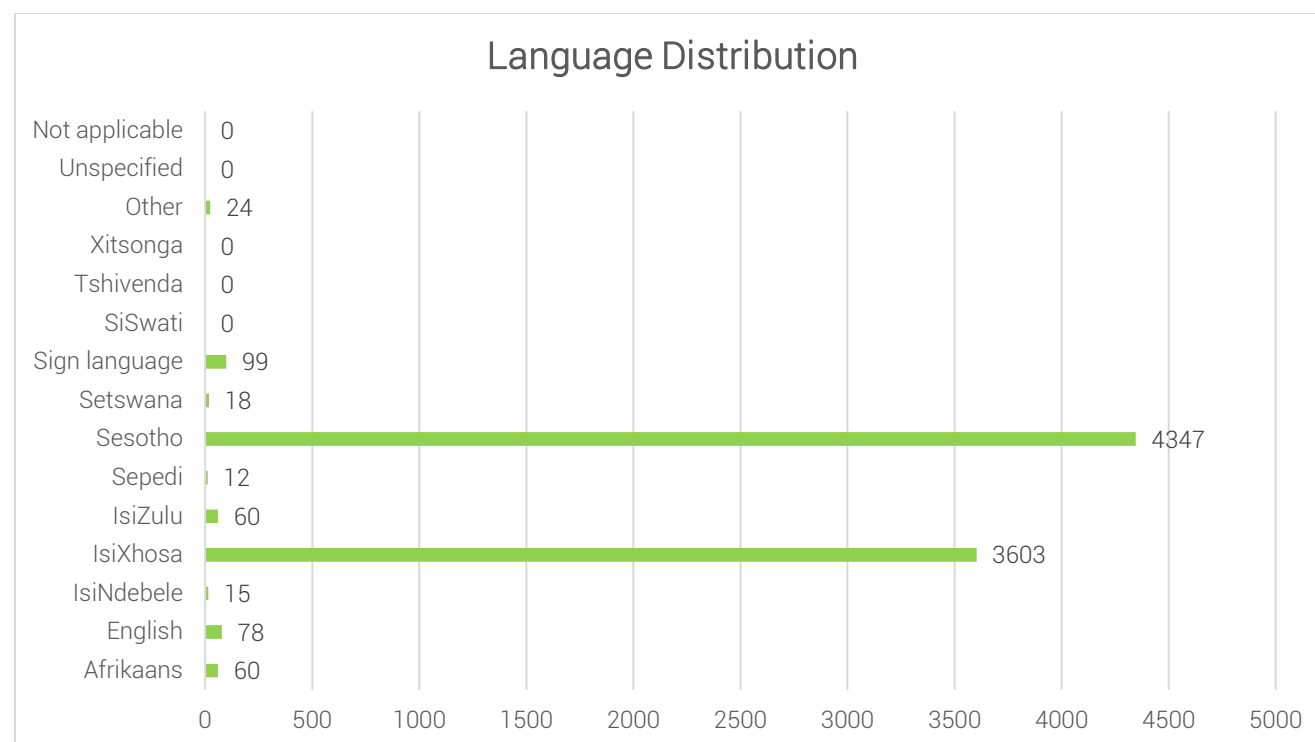


Figure 3: Language Proficiency within Ward – Census 2011

#### 5.1.5. Social Grants

There were no social grants that were recorded from the Community Based Research exercise carried out.

#### 5.1.6. Indigent Support

In the 2016 survey which was completed by MLM and 49 indigent beneficiaries reside in Ward 04. There a number of indigent households. Although the number is high, it is only a few households that receive indigent supports form the municipality. The challenges that affect to the provision of such support, include beneficiaries with no properly documents, challenges with verification of beneficiaries amongst other issues. The current indigent register shows that only 49 beneficiaries.

A rural municipality with a high dependency rate on social assistance; MLM has a large number of indigent households. Particularly for this ward. There a number of indigent households. Although the number is high, it is only a few households that receive indigent supports form the municipality. The challenges that affect to the provision of such support, include beneficiaries with no properly documents, challenges with verification of beneficiaries amongst other issues. The current indigent support register show that only 49 beneficiaries.

### 5.2. Household Profile

The section below details of households within Ward 04 in terms of their size, gender of heads of households and distribution.

#### 5.2.1. Household Size

The average household size within ward 03 is 4 persons per households.

#### 5.2.2. Heads of Households

The issue of child headed households remains a major challenge in Ward 04 and MLM alike. There is a need to prioritise support in the form of community awareness and social programmes in keeping with teenage pregnancy and contraception. The challenges is exacerbated by the trends of a larger part of the population which is represented by females also heading many households.

Based on the table below it is evident that the issue of child headed households is a major issue. Based on Census data we see that Tsepisong has 231 female headed households which is the highest of all villages.

Villages	Child-Headed households		Female-Headed Households	
	Community Feedback	Census 2011	Community Feedback	Census 2011
Tiping	20	12	600	258
Bethel	15	9	50	225
Sehlabeng	27		60	

Mazizini	1		7	
Tsitsong	10	0	8	63
Zikhalini	14		61	
<b>Total</b>	<b>87</b>	<b>45</b>	<b>786</b>	<b>1164</b>

Table 5: Child and Female Headed Households within the Ward - Census 2011

The graph below indicates that approximately 58% of households in ward 04 are headed by females.

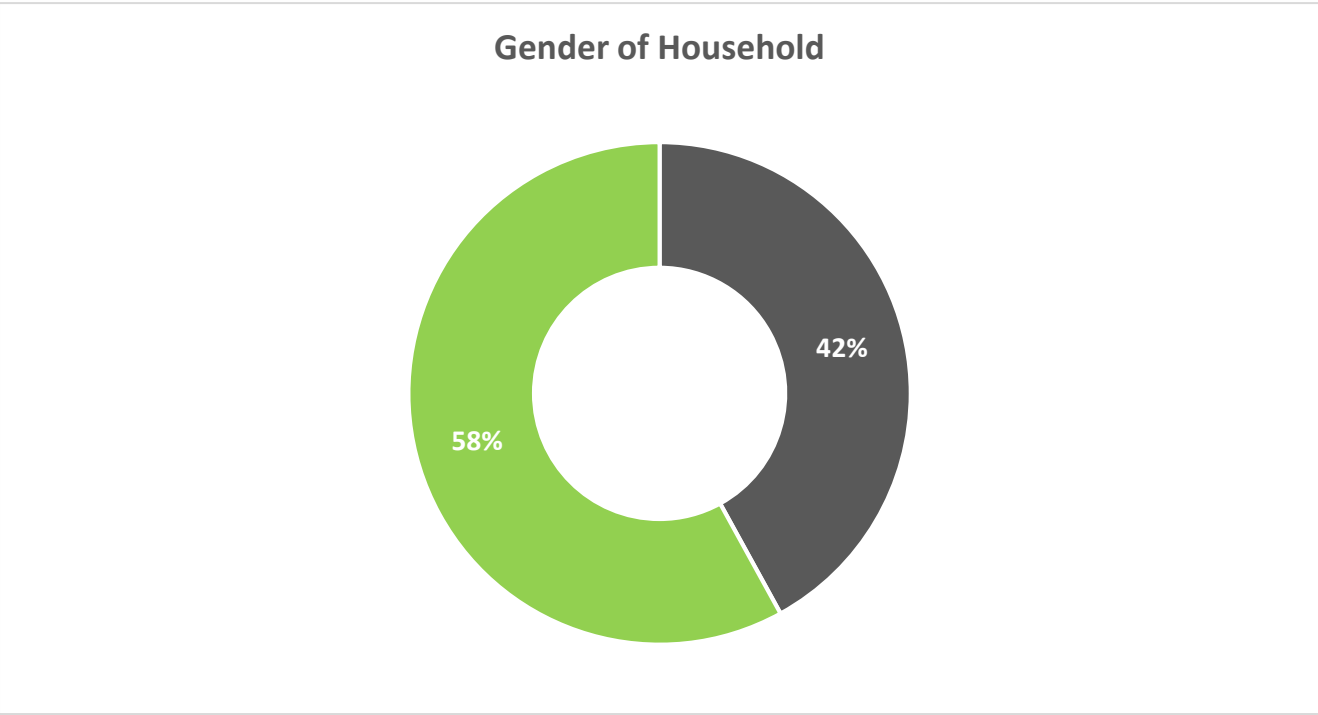


Figure 4: Gender of Household Head - Census 2011

### 5.2.3. Type of Dwelling

The majority of people in Ward 04 live in a brick/concrete structure. A significant number also live in traditional dwellings. There is a strong presence of backyard flats which needs to be considered when developing building standards and regulations within the LM. The housing and backyard flats are a popular settlement feature within the Ward. *There needs to this be greater Land Use Planning By-Law enforcement to ensure that the type of development is controlled and manged.*

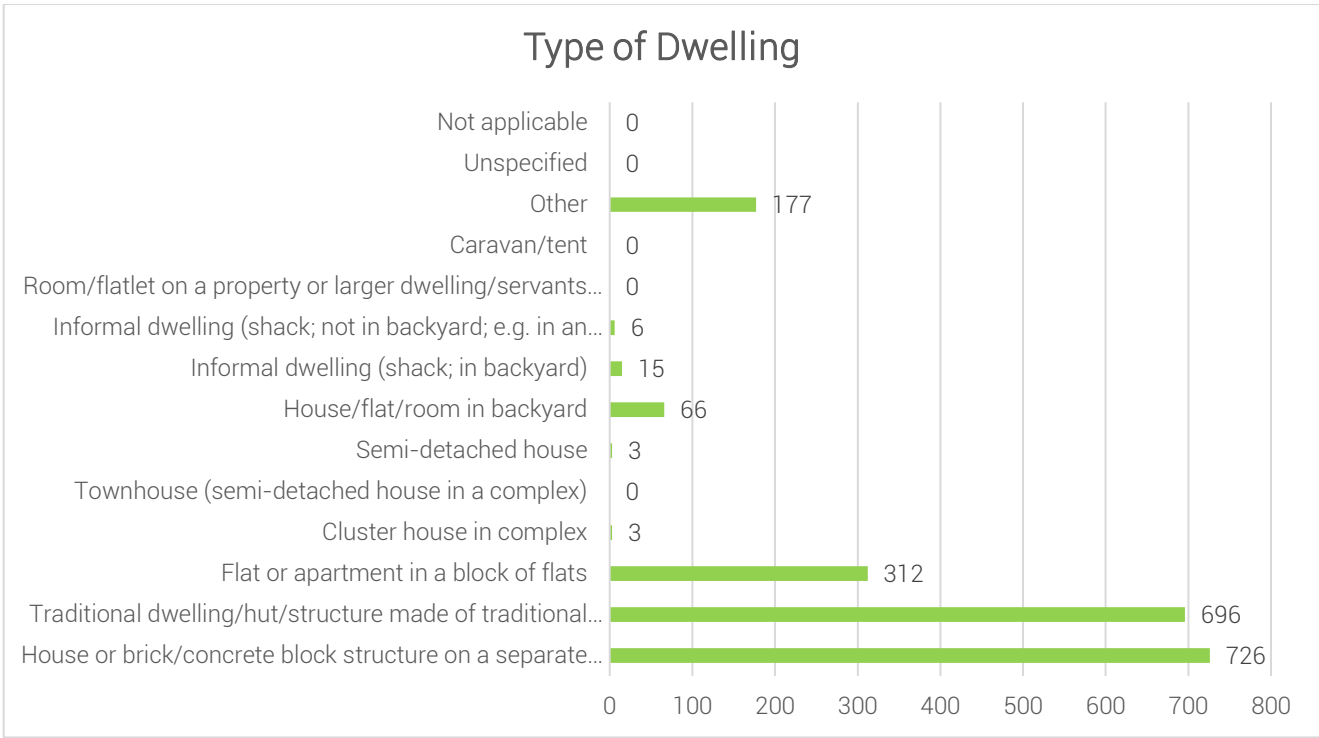


Figure 5: Types of Dwelling within Ward – Census 2011

## 5.3. Social Profile

### 5.3.1. Education Facilities: Community Feedback

The range of schools identified in the table below was developed form the community feedback sessions.

NAME	TYPE	AREA LOCATED	NUMBER OF LEARNERS
Mosa sibi	Secondary school	Zikhalini	1500
Prospect	Primary school	Tiping	532
Phahamang	Primary school	Maphookong	326
Bethel	Primary school	Bethel	687
Edwad's hope	Primary school	Sehlabeng	238
Mazizini	Primary school	Zazingeni	250
Nkasele	Primary school	Nkasele	138



Tsitsong	Primary school	Tsitsong	126
Sehlabeng Pre-School	Pre-School	Sehlabeng	20
Phelang Pre-School	Pre-School	Zikhalini	17
Tswelopele	Pre-school	Zazingeni	44
Tsitsong Pre-School	Pre-School	Tsitsong	22
Phuthanang	Pre-School	Bethel	15
Botlehadi	Pre-School	Maphokong	0 (Not operational)
Vukuzenzele	Pre-School	Tiping	18
Kgotsong	Pre-School	Nkasele	25

Table 6: Education Facilities within Ward - Community Based Planning Program 2017 (Data Collection)

### 5.3.2. Level of Education

498 people have completed grade 8 and 363 have completed Matric. The high number "Not applicable" individuals can be attributed to majority of the population been below the school going age. The stats below indicate that there needs to be more focus on increasing the number of matriculants within the ward. There also needs to be emphasis on provision of employment opportunities for matriculants. These are partnerships that need to be fostered with the LM.

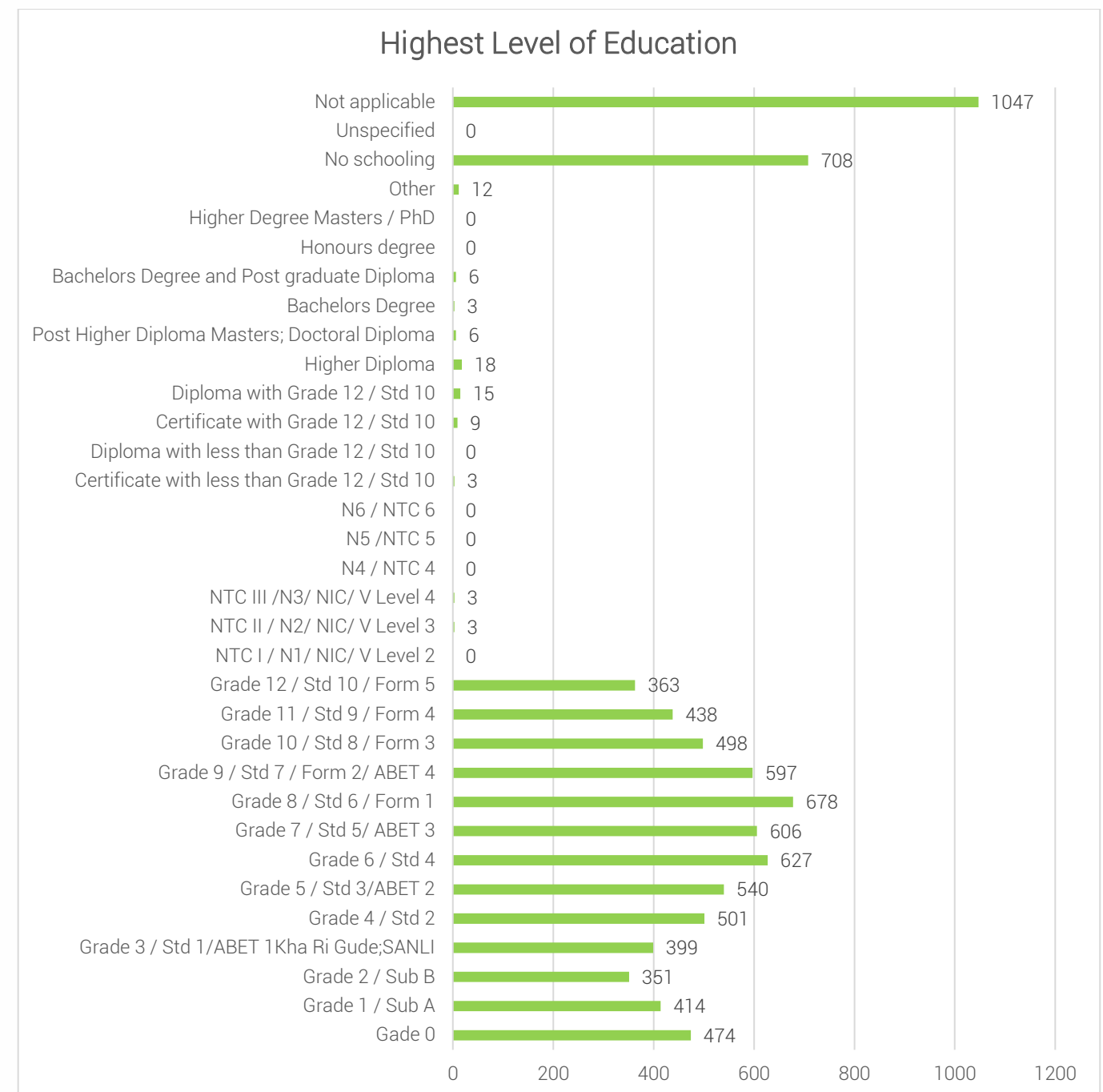


Figure 6: Highest Level of Education within the Ward – Census 2011

5.3.3. Churches and Religious Organisations: Community Feedback

The range of religious facilities identified in the table below was developed form the community feedback sessions. There facilities are well spread out across the Ward assist with social upliftment.

NAME	LOCATION/AREA	NUMBER
St Johns	Zikhalini, tipping	2
Anglican Churches	All	14
Zion Catholic Church	All	10
Assembles of God	Zikhalini	1
Apostolic Church	Zikhalini	1
Methodist Church	Maphokong, Zazingeni	2
Presbyterian Church	Bethel	1
Total		31

Table 7: Churches and Religious Organisations within the Ward - Community Based Planning Program 2017 (Data Collection)

5.3.4. Health Care Facilities: Community Feedback

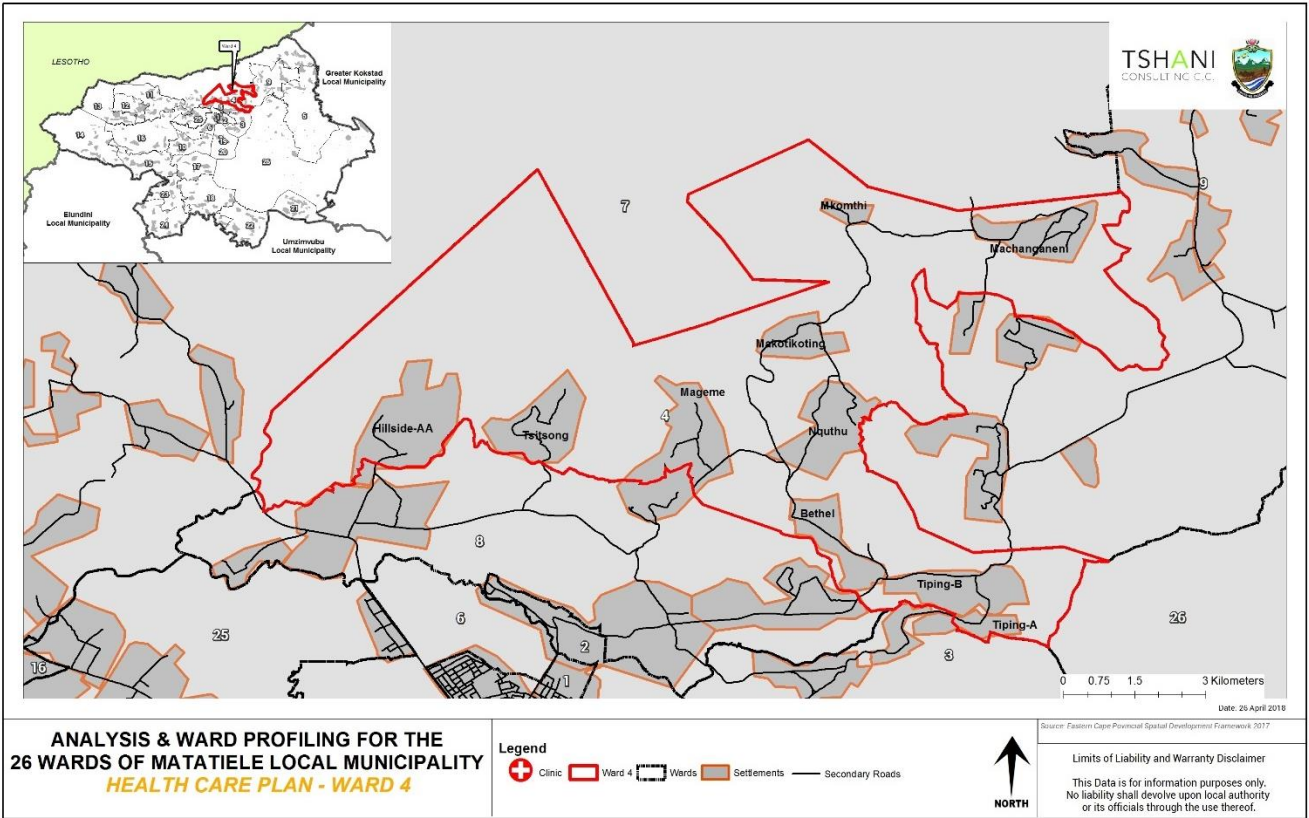
The community feedback identified 4 mobile clinics within the ward. *Health care facilities need to be opened 24 hours to service people at all hours of the day and night, especially for emergency situations.*

Name and type	Area located	Primary services provided
Mobile clinic	Bethel	Community Clinic
Mobile clinic	Maphookong	Community Clinic
Mobile clinic	Zazingeni	Community Clinic
Mobile clinic	Sehlabeng	Community Clinic

Table 8: Health Care Facilities: Community Based Planning Program 2017 (Data Collection)

5.3.5. Health Care Facilities

The map below spatially identified 0 clinics which are located in Ward 04. This implies that the Facilities from neighbouring ward are servicing Ward 04. *Efforts need to be made to ensure facilities are adequate to service all wards.*



Plan 2: Health Care facilities

5.3.6. Community Hall: Community Feedback

There is 1 community hall within the ward in, Bethel. It is to be noted that facilities such as school serve more than one function within the ward.

Name and type	Area located
Bethel Community Hall	Bethel

Table 9: Community Halls - Community Based Planning Program 2017 (Data Collection)

5.4. Economic Profile

5.4.1. Individual Monthly Income

Over half of the population of ward 04 receives less them R800 or no income monthly. This community has low to medium income earners. The income within the ward has potential to be much higher given the youthful population falling within the working age bracket However, the high number of school going people within the ward contributes to the low income.



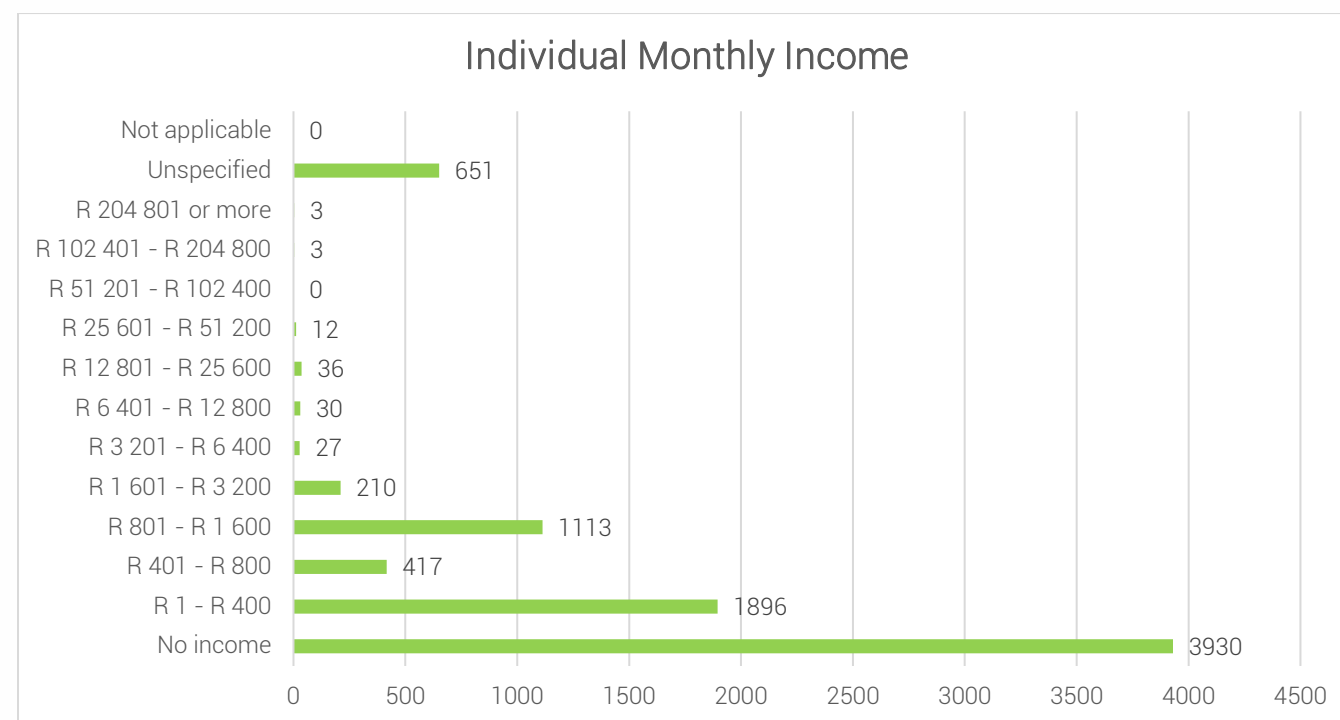


Figure 7: Individual Monthly Income - Census 2011

#### 5.4.2. Economic Activities: Community Feedback

It is noted that Spaza shops and taverns are most dominant in ward 04. There are no variant business in Ward 04. This is very typical of areas with a very high unemployment rate and youthful populations. The issue with such a case is that practices of alcoholism and substance abuse become rife. The resultant social challenges facing such wards include criminal activity, teenage pregnancy, rape and addiction. A hair salon and internet cafe were also recorded in ward 04 which is encouraging.

RETAIL( INDICATE SHOPS, SPAZA SHOPS, CAFÉ, TARVENS, SALONS, ETC)	
TYPE	LOCATION
Taverns	Zikhalini, Mazizini, Bethel, Maphookong and Tiping
Spaza shops	All villages
Shops	All villages

Table 10: Economic Activity - Community Based Planning Program 2017 (Data Collection) Tourism Activities

#### 5.4.3. Tourism Activities

There are no tourism activities within Ward 04. There is a need to focus on the resources within the ward that can be shared with neighbouring tourism opportunities.

#### 5.4.4. Agricultural activities

The agricultural activities within Ward 04 include large scale projects which provide for subsistence living and selling to communities. These activities are mainly linked to related to fresh produce and grains. More activities of this nature need to be encouraged within the ward.

TYPE OF PRODUCTS	AREAS / VILLAGES	FOR HOUSEHOLD CONSUMPTION	FOR SELLING TO THE COMMUNITY
Cattle	Yes	Yes	Cattle
Sheep	Yes	Yes	Sheep
goats	Yes	Yes	goats
horses	Yes	Yes	horses
Poultry	No	No	Poultry
Vegetables		Yes	Yes
Fruits		Yes	yes
grains		No	No

Table 11: Agricultural Activities - Community Based Planning Program 2017 (Data Collection)

#### 5.4.5. Products Produced in Wards

The table below indicates that products such as livestock, bricks, milk and clothing are available within the ward that are locally produced. Such individuals responsible for these activities should be better supported and encouraged to expand. The LED directorate of the municipality needs to actively try to open market opportunities for such traders to ensure that they can participate in the local economies. The products produced within the ward need not confine its footprint to the Ward and rather needs to look at cross-border product provision.

TYPE OF PRODUCTS	AREAS / VILLAGES	FOR HOUSEHOLD CONSUMPTION	FOR SELLING TO THE COMMUNITY
Animals (Goat, Sheep, Cattle)	All	Yes	Yes
Blocks	Bethel, zikhalini, mazizini		yes
Milk	Bethel	Yes	Yes
Clothing	Zikhalini, newstance, zazingeni		yes

Table 12: Products produced within the ward- Community Based Planning Program 2017 (Data Collection)

5.4.6. Existing Skills

The ward constitutes of some diverse skills which is a major asset for the ward. Such individuals need to be further trained and opportunities to mentor other unemployed individuals within the community should be encouraged. The entrepreneurs within ward should also be given better access to market opportunities. There a broad range of professionally qualified individuals whom also are major assets for Ward 04.

TYPE OF SKILLS	EXISTING (INDICATE WITH YES/NO)	TYPE OF SKILLS	EXISTING (INDICATE WITH YES/NO)
Carpenters	Yes	Pottery	No
Plumbing	Yes	Teachers	Yes
Builders	Yes	Police	Yes
Artists	Yes	Health officials	Yes
Gardening	Yes	Accountants	Yes
cooking	Yes	Engineers	Yes
sewing	Yes	Lawyers	Yes
writing	Yes	Other (indicate)	Yes
drivers	Yes	Security	Yes
farmers	Yes	Sewing	yes

Table 13: Existing Skills within the Ward: Community Based Planning Program 2017 (Data Collection)

6. Built Environment Assessment

6.1. Access to Waste Removal

The Local Municipality does not provide waste removal services to this ward.

6.2. Access to piped Water

The main supply of water in ward 04 is from a community stand taps. Only four (4) villages have access to piped water in this ward. An addition of community taps needs to be considered by the District Municipality as many villages in this ward appear not to have access to piped water.

VILLAGE/LOCATION	COMMUNITY TAPS	WATER-INSIDE YARD	WATER-INSIDE HOUSE	BOREHOLES	DRAW WATER FROM STREAMS, DAMS, RIVER
Tiping	15	n/a	n/a	3	Yes
Bethel	15	20	n/a	4	Yes
Zikhalini	15	n/a	n/a	4	Yes
Maphookong	N/A	n/a	n/a	n/a	Yes
Zazingeni	N/A	n/a	n/a	n/a	Yes

Mazizini	N/A	n/a	n/a	n/a	yes
Tsitsong	6	n/a	n/a	n/a	n/a
Nkasele	31	n/a	n/a	n/a	n/a
Newstance	5 (on progress)	n/a	n/a	n/a	Yes
Sehlabeng	n/a	n/a	n/a	n/a	Yes

Table 14: Access to water- Community Based Planning Program 2017 (Data Collection)

6.3. Main source of Energy within the Ward: Community Feedback

The main source of energy within Ward 04 is electricity and solar. This indicates that the level of service within the ward is relatively high and there's emphasis on renewable energy. The analysis below further reiterates the status of electrification within the ward based on categories of lighting, heating, and cooking.

VILLAGE/LOCATION	ELECTRICITY	SOLAR	NO ELECTRICITY/SOLAR
Tiping	Yes		
Bethel	Yes		
Zikhalini	On Progress	Yes	
Maphookong	On progress	Yes	
Zazingeni	Yes		
Maizizini	Yes		
Tsitsong		Yes	
Nkasele	Yes		
Newstance		Yes	
Sehlabeng		yes	

Table 15: Main source of energy- Community Based Planning Program 2017 (Data Collection)

6.4. Access to Sanitation

3273 people use pit toilets with ventilation. Only three villages that appear not to have sanitation in the ward and Nkasele shows a few households with sanitation, the District Municipality needs to consider the toilet infills to those households with no sanitation and construct toilets for those villages with no sanitation at all.

VILLAGE/LOCATION	VENTILATED PIT TOILETS	FLUSH TOILETS	Other
Tiping	740	n/a	n/a
Bethel	438	n/a	n/a
Zikhalini	300	n/a	n/a
Maphookong	154	n/a	n/a
Zazingeni	N/A	n/a	n/a
Mazizini	N/A	n/a	n/a
Tsitsong	N/A	n/a	n/a
Nkasele	8	n/a	n/a
Newstance	80	n/a	n/a
Sehlabeng	169	n/a	n/a

Table 16: Access to sanitation- Community Based Planning Program 2017 (Data Collection)



6.5. Main Source of Energy for Heating

Majority of the people (5676) in ward use wood for purposes of heating. 1245 people use electricity for heating. 1098 people are reliant on paraffin for heating. This can prove to be quite dangerous in the case of negligent handling. Fumes from paraffin burners are also extremely dangerous to one’s health. The map below show that 1000 – 2000 people use electricity for heating.

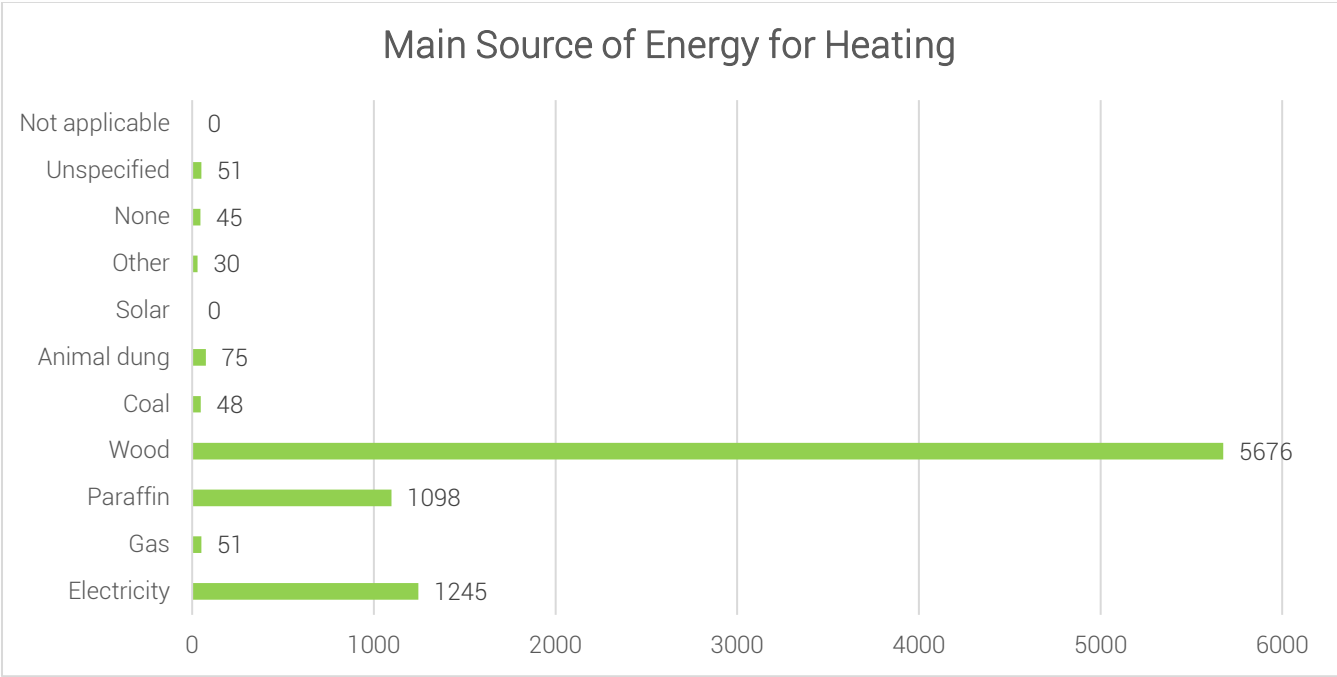
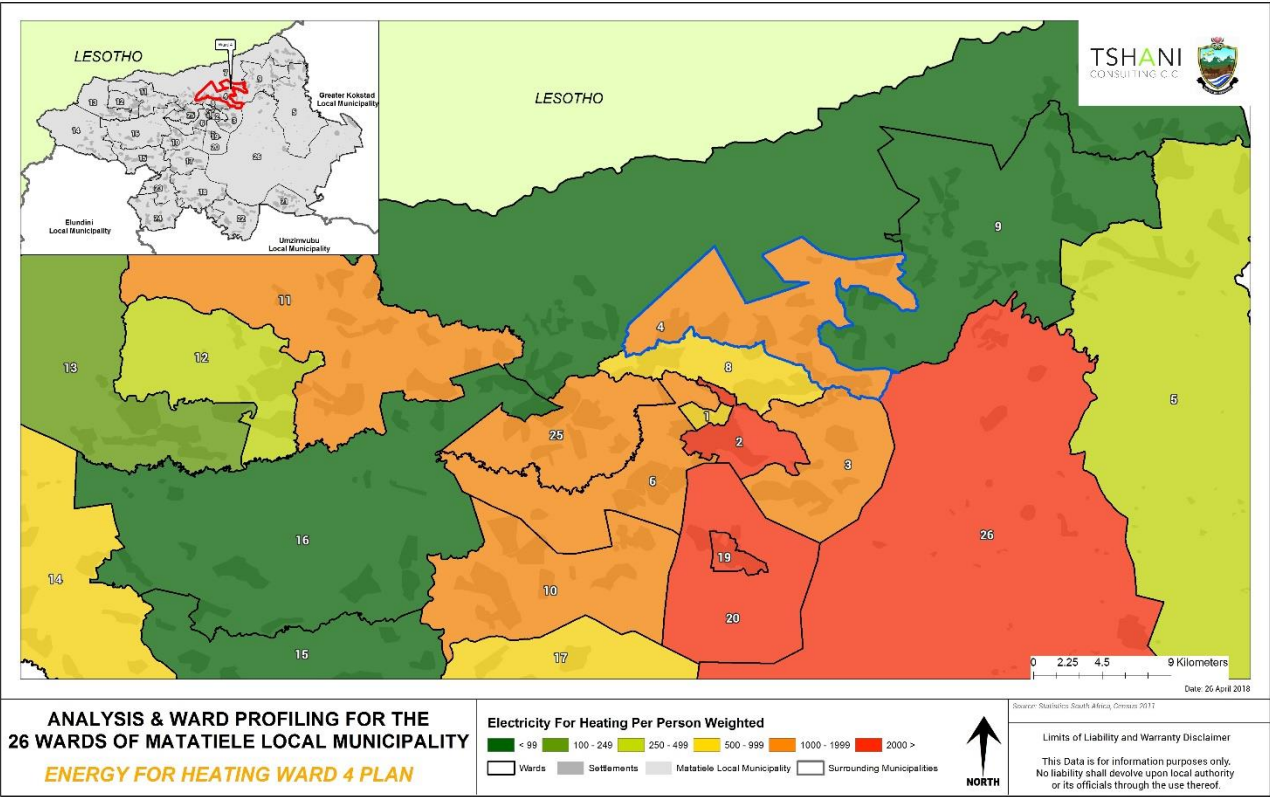


Figure 8: Source of Energy for Heating within the Ward - Census 2011



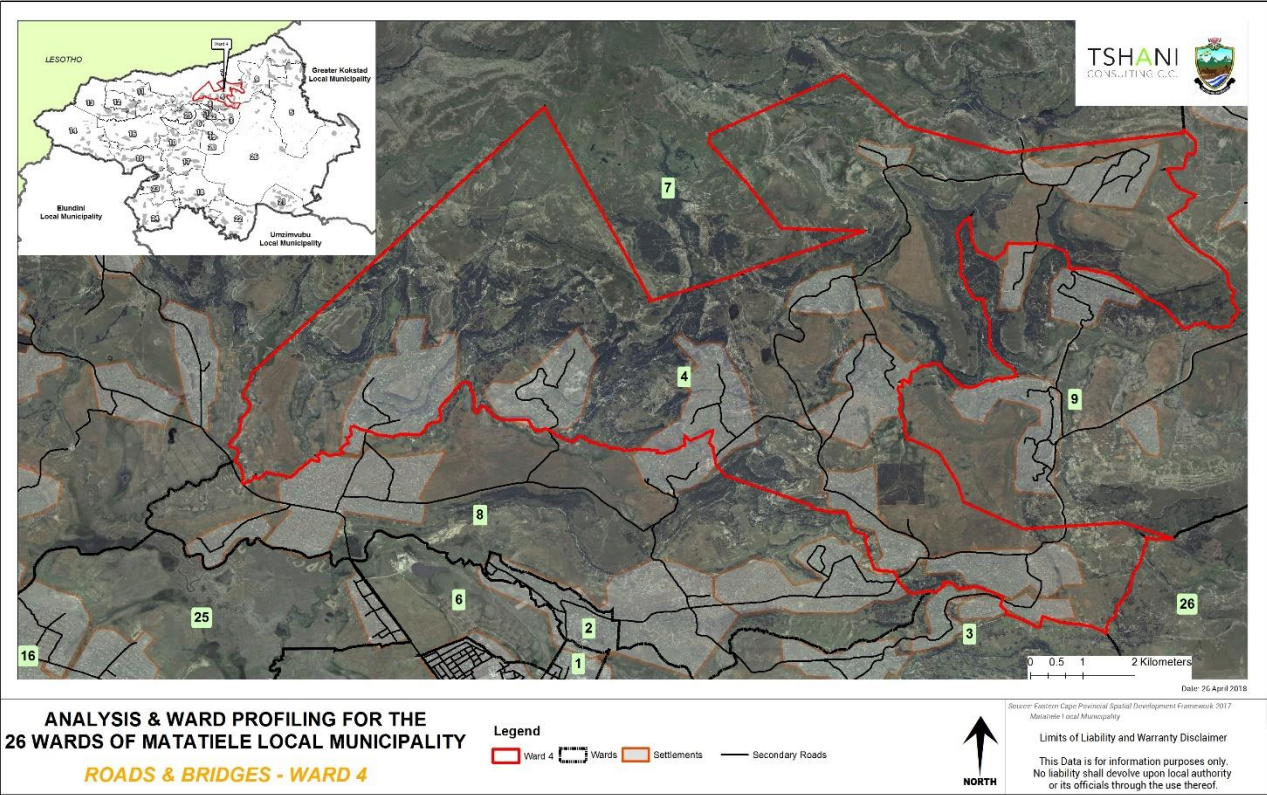
Plan 3: Access to Electricity for Heating Within the Ward

6.6. Roads and Bridges

There were number of roads and bridges which were recorded for Ward 04 in the. Data which was available from the data collection and community consultation completed in the previous phase.

NAME AND TYPE	AREAS COVERED	CONDITION OF THE ROADS
Zikhalini Bridge	Zikhalini Village	Good condition
Tsitsong Bridge	Tsitsong	Needs Maintenance
Maphokong Bridge	Maphokong and Newstance	Fair (Needs Maintenance
Tiping Access Road	Bethel, Zikhalini, Zazingeni, Mazizini, Nkasele and Maphokong	Bad condition ( needs Maintenance)
T-Road DR080106	Bethel, Outspan	Needs Maintenance
Nkasele Bridge	Nkasele	Needs Maintenance

Table 17: Roads and bridges within ward- Community Based Planning Program 2017 (Data Collection)



Plan 4: Roads and Bridges within the Ward - MLM GIS

7. Current Projects

The following table highlighted the key projects which have been identified by the community. The current projects are mainly linked to co-operative and infrastructure ventures which are facilitated by the municipality. Further projects need to be targeted towards building a local economic base, skills development and spatial resilience.

No	PROJECT/PROGRAMME NAME	STATUS	WHO IS RESPONSIBLE
	Mazizini and Zazingeni access road	In progress	Mabona civil and plant hire
	Mazizini project	In progress	Nontlanganiso Xorile
	Tshwaranang piggery	In progress	Samuel Ludiza
	Mookodi Old Age	In progress	Maamohelang Sibi
	Maphookong and Zikhalini electrification	In progress	Siza Makara
	Newstance water supply	In progress	
	Tswelopele agriculture and fencing	In progress	Mrs Mokhoabane
	Thuthukani sand and blocks	In progress	MrMabusela

TTable 18: Roads and Bridges within the Ward - Community Based Planning Program 2017 (Data Collection)

8. Ward Needs and Priorities

The need and priorities which have been identified need to be prioritised in the municipal SDF and other local plans created. The projects range from short to long term projects and have been further broken down in the implementation plan. . The ward priority plan also identifies the locations of priority provincial projects which are located within ward 01. There are projects which are present for the department of education and Public works.

VILLAGE/LOCATION/ SUB AREA	NEEDS IDENTIFIED
Zazingeni	Water, sanitation, pre-school maintenance, Access road (Setakaneng-Tsitsong), Access Road (Mazizini to Free State)
Bethel	Access road, water taps maintenance, Pre-school maintenance, Moyaneng access road, sports field, Electricity infills, Water pump maintenance
Zikhalini	Access road, water taps maintenance, RDP Houses, Police station
Maphokong	Bridge (Linking Maphokong and New Stance), Pre-school maintenance
Sehlabeng	Dipping facility, water, electricity, access road maintenance, pre-school maintenance, fire fighters



Tshitsong	Electricity, addition of water taps, access road maintenance, RDP Houses, sanitation, access road (Tshitsong to Nkasela)
New Stance	Electricity, Pre-school, Access Road maintenance
Tipping	Water taps maintenance, access road maintenance, Clinic, Access road (Prospect to Ditsheng), Pre-school maintenance
Nkasele	Access road maintenance, water scheme maintenance

Table 19: Ward Needs - Community Based Planning Program 2017 (Data Collection)

WARD 04	
INFRASTRUCTURE PRIORITIES	SOCIO- ECONOMIC PRIORITIES
1. RDP Houses	
2. Electricity infills	
3. Sports field	
4. Sanitation	
5. Access Road Maintenance	

Table 20: Ward Priorities - Community Based Planning Program 2017 (Data Collection)

### 9. Stakeholder within the Ward

The table below highlights the stakeholders which were engaged with during the Community engagement sessions.

Name Of Stakeholder	CONTACT PERSON AND TEL
Traditional leader	Sibi levy 0829684317
Community police forum	Motsi peo 082622754
Community work programme	Mamgabo mashaba 0736810454
Headman nkasele	0791306568
Principal	Nketle 0733068664
Community base programme	Nozolani mandisi 0727104007
Ward committee	Nonceba p xaki 0606748162

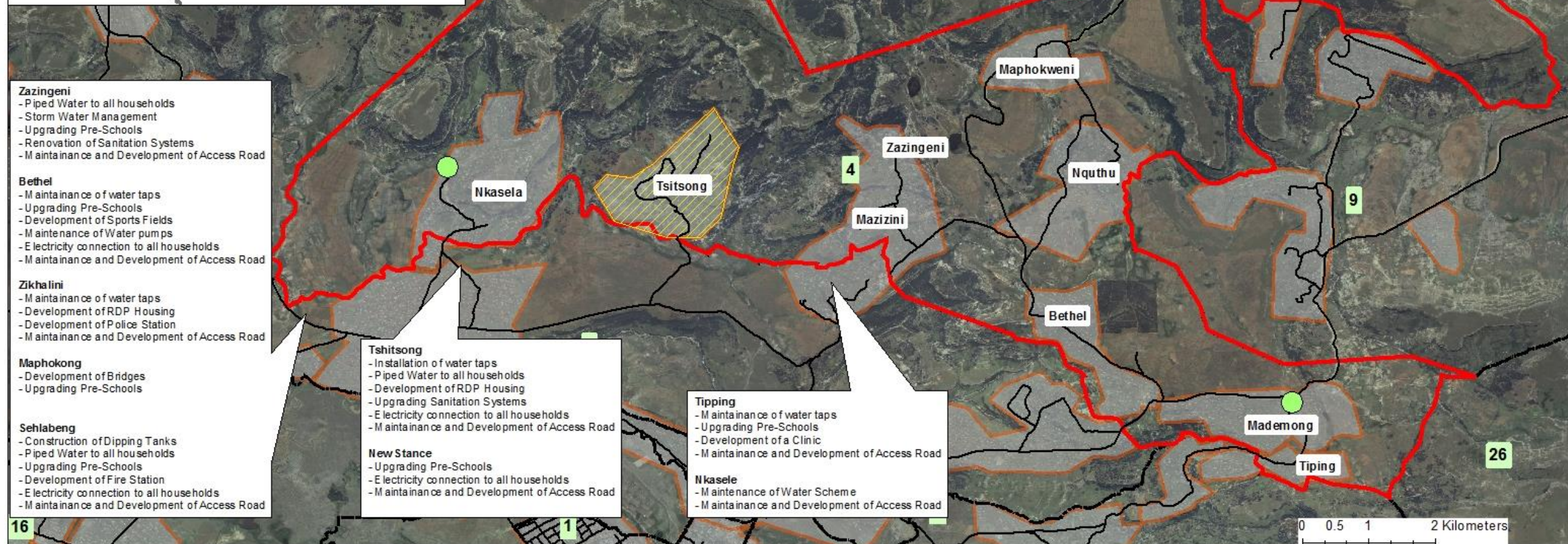
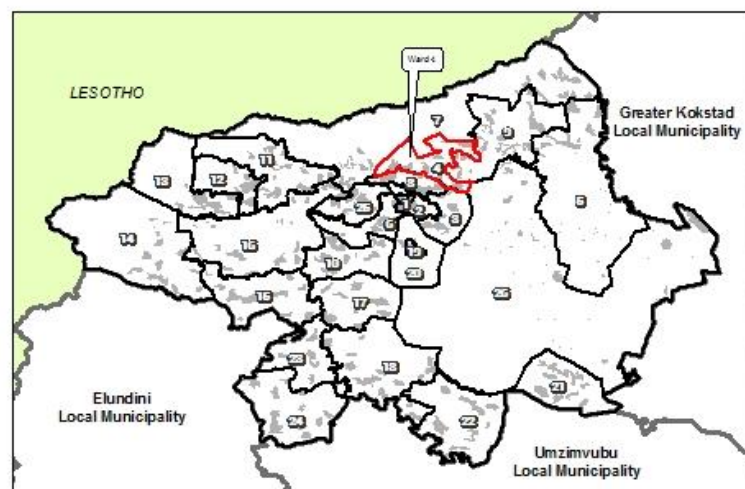
Table 21: Stakeholder within Ward – Community Based Planning Program 2017 (Data Collection)

### 10. Social Challenges within Ward

CHALLENGES IDENTIFIED	AFFECTED AREAS	IMPACT
Rape	Tiping	No peace
Crime (Robberies)	Ward as a whole	Robberies take place frequently,
Identity Documents	Ward as a whole	People from Lesotho flocked in a village with no Ids. Children with no birth certificates
Stock theft	Ward as a whole	Detrimental to the farming activities

Table 22: Challenges within Ward – Community Based Planning Program 2017 (Data Collection)





## ANALYSIS & WARD PROFILING FOR THE 26 WARDS OF MATATIELE LOCAL MUNICIPALITY

### WARD PRIORITY PLAN - WARD 4

#### Legend

DoE DHS Ward 4 Wards Settlements Secondary Roads



Source: Eastern Cape Provincial Spatial Development Framework 2017

#### Limits of Liability and Warranty Disclaimer

This Data is for information purposes only.  
No liability shall devolve upon local authority  
or its officials through the use thereof.